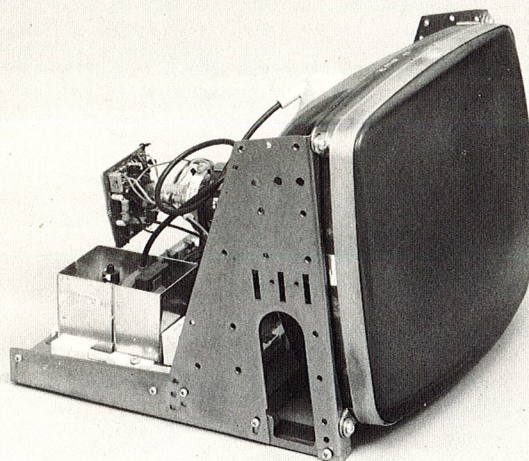
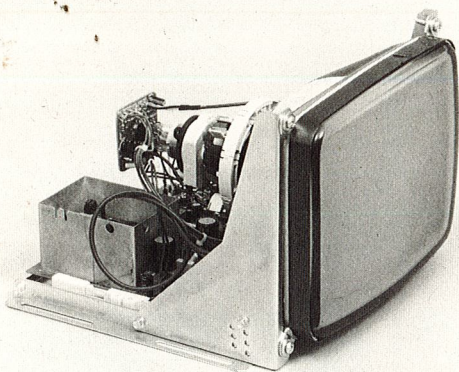


MI 3000 9 - MI 3000 12

open frame high resolution monochrome monitors



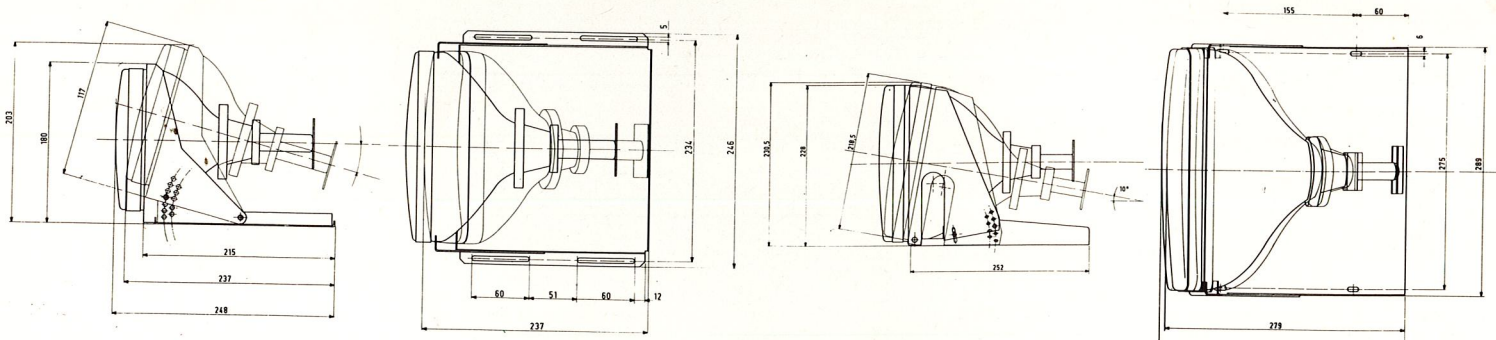
characteristics

			COMPOSITE VIDEO	VIDEO SYNC. H/V COMPOSITE	VIDEO SYNC H/V SEPARATE
CRT	SIZE	9"-12"			
	DEFL. ANGLE	90°			
DISPLAY FORMAT	CHARACTERS	2000 (80×25)			
VIDEO	INPUT SIGNAL		COMPOSITE 1 Vpp	TTL COMPATIBLE	TTL COMPATIBLE
	H. SYNC.		—	COMP. POS. OR COMP. NEG.	SEP. POS. OR SEP. NEG.
	V. SYNC		—	COMP. POS. OR COMP. NEG.	SEP. POS. OR SEP. NEG.
	RISE/FALL TIME	≤ 20ns			
	BANDWIDTH	20MHz			
	CENTRE RESOLUTION LINES/IN	1000			
	INPUT RESISTANCE		75 Ohm or > 5 K	500 Ohm	500 Ohm
	BLANKING TIME	HORIZONTAL	≥ 11 μs		
	VERTICAL	≥ 150 μs			
H. SYNC.	FREQUENCY (± 500Hz)	15.625 Hz			
	PULSE WIDTH	3-10 μs			
	INPUT RESISTANCE		—	> 1,5 K	> 1,5 K
V. SYNC.	FREQUENCY	48-60 Hz			
	PULSE WIDTH	120-500 μs			
	INPUT RESISTANCE		—	> 1,5 K	> 1,5 K
EHT	(O BEAM)	13kV			
POWER SUPPLY	VOLTAGE	12 ÷ 13.5 Vdc			
	CURRENT	1.5 A max			
GEOMETRY	RASTER DISTORTION	max 1%			
	SCAN LINEARITY	max 10%			
	FOCUS	internal control			
	V. AMPLITUDE	internal control			
	V. FREQUENCY	internal control			
	V. LINEARITY	internal control			
	H. AMPLITUDE	internal control			
	H. FREQUENCY	internal control			
	H. LINEARITY	internal control			
	H. PHASE	internal control			
	INPUT LEVEL	VIDEO TTL		—	INTERNAL
BRIGHTNESS	EXTERNAL				
CONTRAST			EXTERNAL	—	—
ENVIRONMENTAL	AMBIENT TEMPERATURE	0°C+55°C			
	AMBIENT HUMIDITY	5-90%			
	STORAGE TEMPERATURE	-40°C+65°C			
	STORAGE HUMIDITY	5-90%			
WEIGHT	GROSS/NET	3.2/3.6 kg. - 5/5.5 kg			
DIMENSION PACKING		290×290×295 mm			
		360×355×290 mm			

OPTIONAL: CRT P4 white and CRT L1 amber

HANTAREX[®] Electronic Equipment Manufacturer

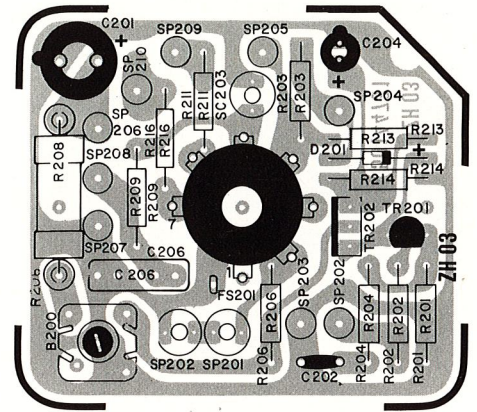
mechanical data



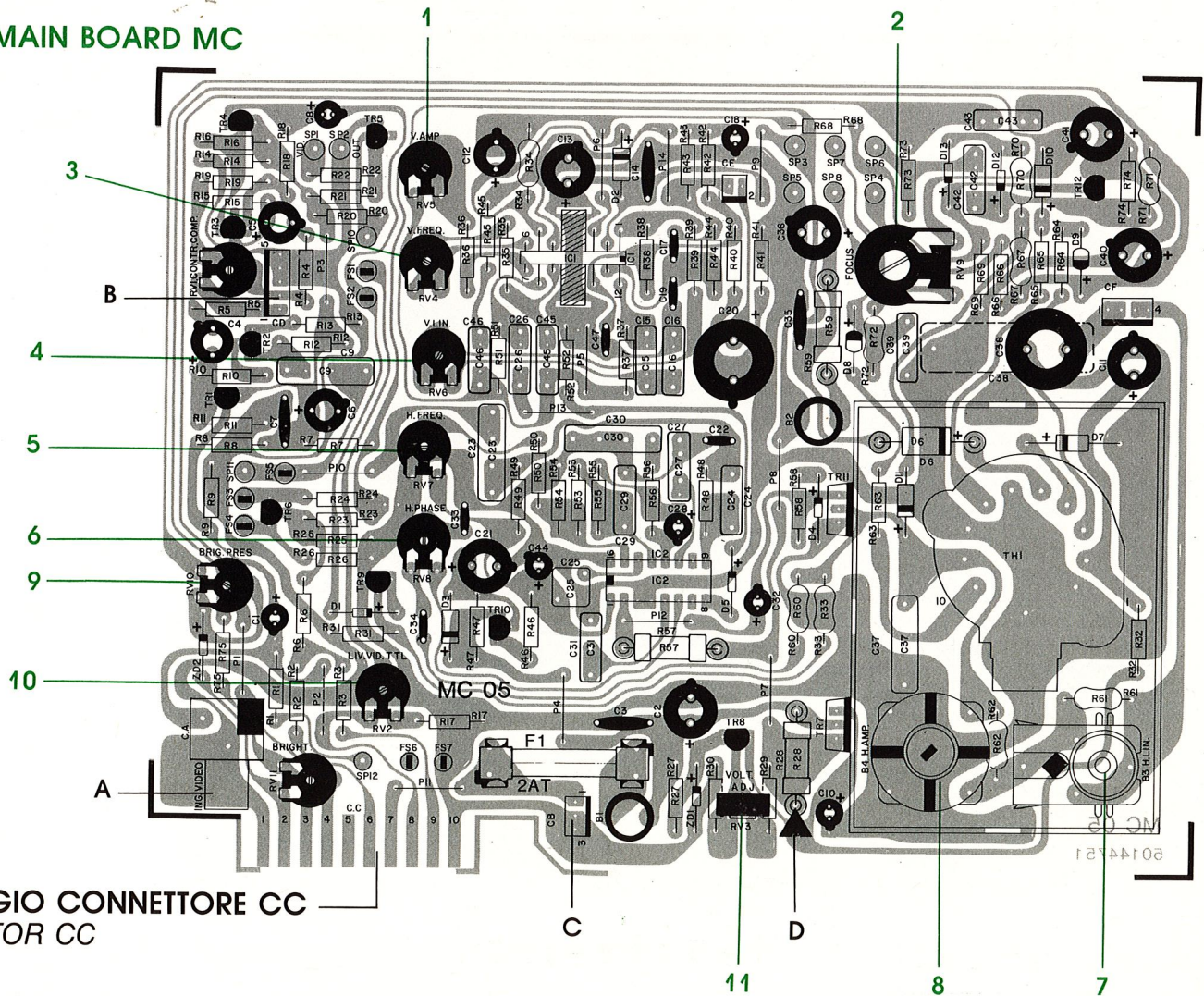
printed circuit board

NECK BOARD ZH

- A - connettore CA (tipo RCA) per ingresso video composto con cavo schermato
connector CA (phono) for composite video input via screened cable
- B - connettore CD per il controllo esterno del contrasto
connector CD for external contrast control
- C - connettore CB supplementare per ingresso alimentazione (PIN 1 = 12 Vdc; PIN 2/3 = massa)
supplementary connector for power input (PIN 1 = 12 Vdc; PIN 2/3 ground)
- D - reoforo R 28: punto di controllo del 10.8 Vdc
lead from resistor R 28: test point (10.8 Vdc)



MAIN BOARD MC



CABLAGGIO CONNETTORE CC
CONNECTOR CC

CABLAGGIO INGRESSO SEGNALI E ALIMENTAZIONE SU CONNETTORE CC

SIGNAL AND POWER INPUT CABLE ON CONNECTOR CC

COMPOSITE VIDEO	VIDEO SYNC H/V COMPOSITE	VIDEO SYNC H/V SEPARATE
1 - ground	1 - ground	1 - ground
2	2	2
3 brightness	3 brightness	3 brightness
4	4	4
5 - N.C.	5 - N.C.	5 - N.C.
6 - N.C.	6 - N.C.	6 - horizontal sync.
7 - 12 Vdc	7 - 12 Vdc	7 - 12 Vdc
8 - video	8 - video	8 - video
9 - N.C.	9 - horizontal/vertical sync	9 - vertical sync.
10 - ground	10 - ground	10 - ground

ADJUSTING TRIMMERS

1 - ampiezza verticale <i>vertical height</i>	6 - fase orizzontale <i>horizontal shift</i>	10 - ampiezza segnale ingresso video <i>video input signal amplitude</i>
2 - regolazione tensione di fuoco <i>focus</i>	7 - linearità orizzontale <i>horizontal linearity</i>	11 - regolazione tensione alimentazione (10.8 Vdc) *
3 - frequenza verticale <i>vertical frequency</i>	8 - ampiezza orizzontale <i>horizontal width</i>	* Per la giusta regolazione dell'alimentazione del monitor misurare sul reoforo della resistenza R28 la tensione di 10.8 Vdc regolando il trimmer RV3 <i>For correct setting of the monitor supply, adjust trimmer RV3 while measuring the voltage on the lead from resistor R28, which should be 10.8 Vdc.</i>
4 - linearità verticale <i>vertical linearity</i>	9 - preset luminosità <i>brightness preset</i>	
5 - frequenza orizzontale <i>horizontal frequency</i>		

POSSIBILI APPLICAZIONI E RELATIVE CONNESSIONI

VIDEO COMPOSITO BASSA IMPEDENZA (impedenza d'ingresso 75 Ohm) ingresso connettore RCA (CA)

SEGNALI NECESSARI - Video composito standard
(video positivo sincronismi negativi)

POSIZIONE PONTICELLI - P 2 eliminare
SP 12 in posizione FS 7
SP 10 in posizione FS 2
SP 11 in posizione FS 5

VIDEO COMPOSITO ALTA IMPEDENZA (impedenza d'ingresso >5 K Ohm) ingresso connettore RCA (CA)

SEGNALI NECESSARI - Video composito standard
(video positivo sincronismi negativi)

POSIZIONE PONTICELLI - P 2 eliminare
SP 12 in posizione FS 6
SP 10 in posizione FS 2
SP 11 in posizione FS 5

VIDEO COMPOSITO BASSA IMPEDENZA (impedenza d'ingresso 75 Ohm) ingresso Pin 8 connettore 10 vie (CC)

SEGNALI NECESSARI - Video composito standard
(video positivo sincronismi negativi)

POSIZIONE PONTICELLI - P 2 presente
SP 12 in posizione FS 7
SP 10 in posizione FS 2
SP 11 in posizione FS 5

VIDEO COMPOSITO ALTA IMPEDENZA (impedenza d'ingresso > 5 K Ohm) ingresso Pin 8 connettore 10 vie (CC)

SEGNALI NECESSARI - Video composito standard
(video positivo sincronismi negativi)

POSIZIONE PONTICELLI - P 2 presente
SP 12 in posizione FS 6
SP 10 in posizione FS 2
SP 11 in posizione FS 5

MODES OF OPERATION AND CORRESPONDING CONNEXIONS

COMPOSITE VIDEO: LOW IMPEDANCE

Input impedance 75 Ohm
Input connector RCA (CA)

SIGNAL REQUIRED - Standard composite video
(positive video, negative sync.)

BRIDGE POSITIONS - P 2 remove
SP 12 to position FS 7
SP 10 to position FS 2
SP 11 to position FS 5

COMPOSITE VIDEO: HIGH IMPEDANCE

Input impedance > 5 K Ohm
Input connector RCA (CA)

SIGNAL REQUIRED - Standard composite video
(positive video, negative sync.)

BRIDGE POSITIONS - P 2 remove
SP 12 to position FS 6
SP 10 to position FS 2
SP 11 to position FS 5

COMPOSITE VIDEO: LOW IMPEDANCE

Input impedance 75 Ohm
Input connexion Pin 8 connector 10-way (CC)

SIGNAL REQUIRED - Standard composite video
(positive video, negative sync.)

BRIDGE POSITIONS - P 2 present
SP 12 to position FS 7
SP 10 to position FS 2
SP 11 to position FS 5

COMPOSITE VIDEO: HIGH IMPEDANCE

Input impedance > 5 K Ohm
Input connexion Pin 8 connector 10-way (CC)

SIGNAL REQUIRED - Standard composite video
(positive video, negative sync.)

BRIDGE POSITIONS - P 2 present
SP 12 to position FS 6
SP 10 to position FS 2
SP 11 to position FS 5

SINCRONISMI COMPOSITI POSITIVI VIDEO SEPARATO POSITIVO

SEGNALI NECESSARI - sincronismo (orizzontale e verticale): ingresso Pin 9 del connettore CC, positivo, livello 1 V minimo, 5 V massimo, impedenza d'ingresso 1,5 K Ohm - Video: ingresso Pin 8 del connettore CC, livello 1,5 V minimo, 5 V massimo, impedenza d'ingresso > 500 Ohm.

POSIZIONE PONTICELLI - P 2 eliminare
SP 11 in posizione FS 4
SP 10 in posizione FS 1

SINCRONISMI COMPOSITI NEGATIVI VIDEO SEPARATO POSITIVO

SEGNALI NECESSARI - sincronismo (orizzontale e verticale): ingresso Pin 9 del connettore CC, negativo, livello minimo 1,5 V, massimo 5 V, impedenza d'ingresso 1,5 K Ohm - Video: ingresso Pin 8 del connettore CC, livello minimo 1,5 V, massimo 5 V, impedenza d'ingresso > 500 Ohm.

POSIZIONE PONTICELLI - P 2 eliminare
SP 11 in posizione FS 3
SP 10 in posizione FS 1

INGRESSI SEPARATI TTL COMPATIBILI. VIDEO POSITIVO, SINCRONISMO ORIZZONTALE POSITIVO, SINCRONISMO VERTICALE POSITIVO.

SEGNALI NECESSARI - Video: ingresso Pin 8 del connettore CC, livello minimo 1,5 V, massimo 5 V, impedenza d'ingresso > 500 Ohm. - Sincronismo orizzontale positivo: ingresso Pin 6 del connettore CC livello minimo 1,5 V, massimo 5 V, impedenza d'ingresso > 1,5 K Ohm - Sincronismo verticale positivo: ingresso Pin 9 del connettore CC, livello minimo 1,5 V, massimo 5 V, impedenza d'ingresso > 1,5 K Ohm.

POSIZIONE PONTICELLI - P 2 eliminare
SP 11 in posizione FS 4
SP 10 in posizione FS 1

INGRESSI SEPARATI TTL COMPATIBILI. VIDEO POSITIVO, SINCRONISMO ORIZZONTALE NEGATIVO, SINCRONISMO VERTICALE NEGATIVO.

SEGNALI NECESSARI - Video: ingresso Pin 8 del connettore CC, livello minimo 1,5 V, massimo 5 V, impedenza d'ingresso > 500 Ohm. - Sincronismo orizzontale negativo: ingresso Pin 6 del connettore CC livello minimo 1,5 V, massimo 5 V, impedenza d'ingresso > 1,5 K Ohm - Sincronismo verticale negativo: ingresso Pin 9 del connettore CC livello minimo 1,5 V, massimo 5 V, impedenza d'ingresso > 1,5 K Ohm.

POSIZIONE PONTICELLI - P 2 eliminare
SP 11 in posizione FS 3
SP 10 in posizione FS 1

SEPARATE POSITIVE VIDEO: POSITIVE COMPOSITE SYNC.S

SIGNAL REQUIRED - Video input impedance > 500 Ohm - Video amplitude 1.5-5.00 V - Video input connexion Pin 8 connector 10-way (CC) - Sync. input impedance 1.5 K Ohm Sync. amplitude 1.0-5.00 V - H/V sync. input connexion Pin 9 connector 10 way (CC)

BRIDGE POSITIONS - P 2 remove
SP 11 to position FS 4
SP 10 to position FS 1

SEPARATE NEGATIVE VIDEO: POSITIVE SEPARATE SYNC.S

SIGNAL REQUIRED - Video input impedance > 500 Ohm - Video amplitude 1.5-5.00 V - Video input connexion Pin 8 connector 10-way (CC) - Sync. input impedance 1.5 K Ohm Sync. amplitude 1.0-5.00 V - H/V sync. input connexion Pin 9 connector 10 way (CC)

BRIDGE POSITIONS - P 2 remove
SP 11 to position FS 3
SP 10 to position FS 1

SEPARATE POSITIVE TTL VIDEO: POSITIVE SEPARATE SYNC.S

SIGNAL REQUIRED - Video input impedance > 500 Ohm - Video amplitude 1.5-5.00 V - Video input connexion Pin 8 connector 10-way (CC) - H/Sync. input impedance > 1.5 K Ohm Sync. amplitude 1.5-5.00 V input connexion Pin 6 connector 10 way (CC) - V/Sync. input impedance > 1.5 K Ohm - Sync. amplitude 1.5-5.00 V input connexion Pin 9 connector 10 way (CC) -

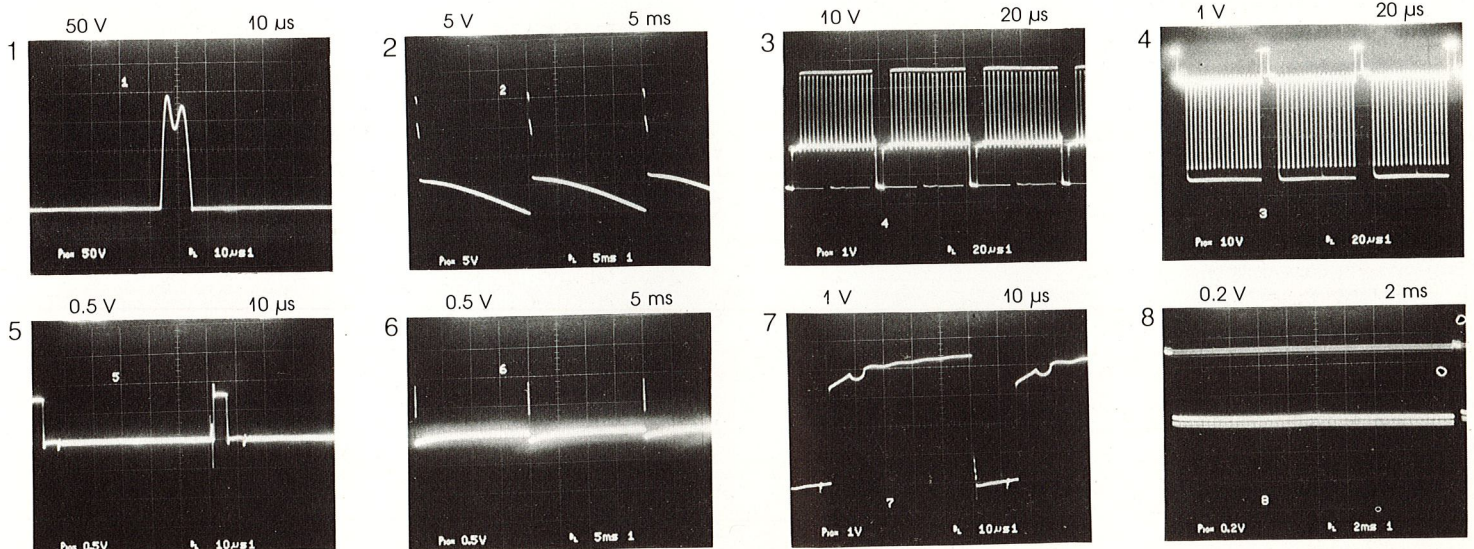
BRIDGE POSITIONS - P 2 remove
SP 11 to position FS 4
SP 10 in position FS 1

SEPARATE NEGATIVE TTL VIDEO: SEPARATE NEGATIVE SYNC.S

SIGNAL REQUIRED - Video input impedance > 500 Ohm - Video amplitude 1.5-5.00 V - Video input connexion Pin 8 connector 10-way (CC) - H/Sync. input impedance > 1.5 K Ohm Sync. amplitude 1.5-5.00 V input connexion Pin 6 connector 10 way (CC) - V/Sync. input impedance > 1.5 K Ohm - Sync. amplitude 1.5-5.00 V input connexion Pin 9 connector 10 way (CC) -

BRIDGE POSITIONS - P 2 remove
SP 11 to position FS 3
SP 10 to position FS 1

waveform



monitor parts list

PACKING ASSEMBLY 9"			
52422130	FRONT POLYSTYRENE MT 2000/9" OSAL UTH 620	1	
52422140	REAR POLYSTYRENE MT 2000/9" OSAL UTH 21	1	
52824820	BOX CARTON MT 3000/9	1	
53874380	MANUAL OPERATING MT 3000 9/12"	1	
PACKING ASSEMBLY 12"			
52422110	SUPERIOR POLYSTYRENE MT 2000/2002-UTH 447	2	
52422120	INFERIOR POLYSTYRENE MT 2000/2002 UTH 448	2	
52824810	BOX CARTON MT 3000 12"	1	
MAIN P.C.B. cod. 62007790			
20100000	DIODE 1N 4148	5	D1-4-5-12-13
20100010	DIODE BA 159	4	D2-3-10-11
20100250	DIODE MR 852	1	D6
20110060	ZENER DIODE 1/2 W ZPD 5,1V	1	ZD1
20150150	DIODE BY 584 (BY 184)	1	D8
20150170	DIODE BYV 95C-600	1	D9
20150270	DIODE RGP 15 G	1	D7
20400430	TRANSISTOR BC 337	2	TR8-12
20401020	TRANSISTOR BC 548 B	6	TR1-2-3-6-9-10
20401030	TRANSISTOR BC 558 B	2	TR4-5
20410100	TRANSISTOR BDX 53 A	1	TR7
20430510	TRANSISTOR BU 806-01 PHILIPS	1	TR11
20620091	INTEGRATED CIRCUIT TDA 1170N SGS	1	IC1
20620190	INTEGRATED CIRCUIT TDA 2593	1	IC2
20670000	INTEGRATED CIRCUIT ZTK 33	1	ZD2
21211002	METAL FILM RESISTOR 1E 1% 1/4 W 100 PPM	1	R41
21213300	RESISTOR 3,3 E 5% 1/4 W	3	R45-64-66
21221000	RESISTOR 10 E 5% 1/4 W	2	R7-46
21223300	RESISTOR 33 E 5% 1/4 W	2	R22-58
21225600	RESISTOR 56 E 5% 1/4 W	1	R4
21227500	RESISTOR 75 E 5% 1/4 W	1	R1
21231000	RESISTOR 100 E 5% 1/4 W	2	R16-19
21231200	RESISTOR 120 E 5% 1/4 W	1	R17
21231800	RESISTOR 180 E 5% 1/4 W	1	R10
21232200	RESISTOR 220 E 5% 1/4 W	2	R5-65
21233300	RESISTOR 330 E 5% 1/4 W	3	R31-47-63
21234700	RESISTOR 470 E 5% 1/4 W	1	R18
21236800	RESISTOR 680 E 5% 1/4 W	2	R13-32
21241000	RESISTOR 1 K 5% 1/4 W	5	R11-12-21-26-69
21241200	RESISTOR 1,2 K 5% 1/4 W	1	R55
21241500	RESISTOR 1,5 K 5% 1/4 W	2	R3-2
21242200	RESISTOR 2,2 K 5% 1/4 W	1	R24
21243300	RESISTOR 3,3 K 5% 1/4 W	1	R56
21244700	RESISTOR 4,7 K 5% 1/4 W	3	R6-15-29
21245600	RESISTOR 5,6 K 5% 1/4 W	2	R42-43
21246800	RESISTOR 6,8 K 5% 1/4 W	3	R25-30-40
21248200	RESISTOR 8,2 K 5% 1/4 W	1	R74
21251000	RESISTOR 10 K 5% 1/4 W	1	R68
21251200	RESISTOR 12 K 5% 1/4 W	1	R51
21251201	METAL FILM RESISTOR 12 K 2% 1/4 100 PPM	1	R54
21251800	RESISTOR 18 K 5% 1/4 W	2	R14-27
21252200	RESISTOR 22 K 5% 1/4 W	4	R8-9-23-48
21253900	RESISTOR 39 K 5% 1/4 W	2	R38-39
21258200	RESISTOR 82 K 5% 1/4 W	1	R53
21261000	RESISTOR 100 K 5% 1/4 W	1	R20
21261200	RESISTOR 120 K 5% 1/4 W	2	R35-50
21261500	RESISTOR 150 K 5% 1/4 W	1	R44
21262200	RESISTOR 220 K 5% 1/4 W	2	R36-75
21264700	RESISTOR 470 K 5% 1/4 W	1	R73
21265600	RESISTOR 560 K 5% 1/4 W	1	R37
21271000	RESISTOR 1 M 5% 1/4 W	1	R52
21272200	RESISTOR 2,2 M 5% 1/4 W	1	R49
213441500	RESISTOR 1,5 K 5% 1/2 W	2	R34
21348200	RESISTOR 8,2 K 5% 1/2 W	1	R61-62
21351000	RESISTOR 10 K 5% 1/2 W	1	R70
21355200	RESISTOR 22 K 5% 1/2 W	1	R67
21355600	RESISTOR 56 K 5% 1/2 W	1	R60
21356800	RESISTOR 68 K 5% 1/2 W	1	R33
21364700	RESISTOR 470 K 5% 1/2 W	1	R72
21403300	METAL OXIDE RESISTOR 0,33 E 10% 1 W	1	R59
21421000	METAL OXIDE RESISTOR 10 E 5% 1 W	1	R28
21432200	METAL OXIDE RESISTOR 220 E 5% 1 W	1	R57
23034702	TRIMMER 470 E ORIZ. PT 10 V	2	RV1-2
23041003	TRIMMER 1 K VERT. PT 10 V	1	RV3
23054701	TRIMMER 47 K ORIZ. PT 10 V	1	RV8
23061005	TRIMMER 100 K ORIZ. PT 10 V	3	RV6-7-11
23062203	TRIMMER 220 K ORIZ. PT 10 V	2	RV4-5
23071002	TRIMMER 1 M ORIZ. PT 10 V	1	RV10
23072200	TRIMMER 2,2 M ORIZ. PT 15 V	1	RV9
24314700	ELECTROLYTIC CAPACITOR 4,7 MF 16 V	2	C22-28
24421000	ELECTROLYTIC CAPACITOR 10 MF 25 V	1	C8
24322200	ELECTROLYTIC CAPACITOR 22 MF 16 V	2	C18-44
24324700	ELECTROLYTIC CAPACITOR 47 MF 16 V	1	C1
24331000	ELECTROLYTIC CAPACITOR 100 MF 16 V	4	C4-5-6-21
24334700	ELECTROLYTIC CAPACITOR 470 MF 16 V	1	C13
24341000	ELECTROLYTIC CAPACITOR 1000 MF 16 V	1	C2
24342200	ELECTROLYTIC CAPACITOR 2200 MF 16 V	1	C20
24412700	BI-POLAR CAPACITOR 2,7 MF 25 V	1	C38
24431000	BI-POLAR CAPACITOR 100 MF 25 V	1	C12
24432200	BI-POLAR CAPACITOR 220 MF 25 V	1	C36
24611000	BI-POLAR CAPACITOR 1 MF 63 V	1	C10
24624710	BI-POLAR CAPACITOR 47 MF 100 V	1	C40
24721000	BI-POLAR CAPACITOR 10 MF 100 V	1	C11
24821000	BI-POLAR CAPACITOR 10 MF 160 V	1	C41
25144701	POLYPROP. CAPACITOR 1,42 4,7NF 63V 2,5% P7,2	1	C25
25261500	POLYESTER CAPACITOR 1,60 150NF 100V 10% P10	1	C45
25262200	POLYESTER CAPACITOR MKT 220NF 100V 100% P10	2	C31-42
25264700	POLYESTER CAPACITOR 1,60 470NF 100V 10% P15	1	C9-23
25266800	POLYESTER CAPACITOR 1,60 680NF 100V 10% P15	1	C30
25461010	POLYESTER CAPACITOR 1,60 100NF 250V 10% P10	5	C15-16-27-43-46
25646800	POLYESTER CAPACITOR 1,60 6,8NF 630V 10% P10	1	C24
25651000	POLYESTER CAPACITOR 1,60 10NF 630V 10% P10	2	C29-39
25652200	POLYPROP. CAPACITOR 1,73 22NF 630V 10% P15	1	C37
25743301	POLYESTER CAPACITOR 1,60 3,3NF 1000V 10% P10	1	C26
26282100	CERAMIC CAPACITOR NPO 82PF 50V 5% P5	2	C17-34
26322101	CERAMIC CAPACITOR NPO 220PF 50V 5% P5	1	C22
26322700	CERAMIC CAPACITOR N450 270PF 50V 10% P5	1	C33
26347102	CERAMIC CAPACITOR N750 470PF 50V 10%	1	C19
26410803	CERAMIC CAPACITOR -20 +80 1NF 50V 20% P5	1	C47
26610601	CERAMIC CAPACITOR -20 +80 100NF 50V P5-7,5-10	4	C3-7-14-35
28020200	CHOKER 8 MH FERRITE CORE UTF 16	2	B1-2
28020290	AMPLITUDE COIL RA 60 UTF 17	1	B4
28021230	EHT TRASFORMER 1082: 0071	1	TH1
28040070	LINEARITY COIL SAREA 250012 UTF 21	1	B3
29100000	FUSE 2A	1	
29100110	FUSE HOLDER FOR PRINTED CIRCUIT 030001	2	
34010061	FASTON CONNECTOR TE 115 2,8x0,8	7	
34040180	CINCH CONNECTOR P.C. TYPE NUVAL ART 5215 P	1	CA
34074232	MALE PRESSAC CONNECTOR 2 S 3562 2P.	1	CE
34074234	MALE PRESSAC CONNECTOR 2 S 3564 4 P	1	CF
34074235	MALE PRESSAC CONNECTOR 3P	1	CD
34074240	MALE PRESSAC CONNECTOR 5P	1	CB
43000010	LEAF SPRING UTH 38	2	
50144752	PRINTED CIRCUIT MT 3000 MC	1	
50144751	PRINTED CIRCUIT MT 3000 MC	1	
50420185	MICA INSULATOR XTO 220 500V	2	
61001100	HARNESS MTC 900/EUR UTC 121	3	
NECK BOARD ASSEMBLY cod. 62007800			
20410450	TRANSISTOR PH 2369	1	TR201
20420110	TRANSISTOR BF 459	1	TR202
21223300	RESISTOR 33E 5% 1/4 W	1	R202
21224700	RESISTOR 47E 5% 1/4 W	1	R204
21227500	RESISTOR 75E 5% 1/4 W	1	R201
21236800	RESISTOR 680E 5% 1/4 W	1	R206
21241000	RESISTOR 1K 5% 1/4 W	1	R209
21242700	RESISTOR 2,7K 5% 1/4 W	1	R213
21251200	RESISTOR 12K 5% 1/4 W	2	R211-216
21242200	RESISTOR 2,2K 5% 1/4 W	1	R214
21541001	METAL OXIDE RESISTOR 1K 5% 2 W	1	R208
24322200	ELECTROLYTIC CAPACITOR 22 MF 16 V	1	C204
24721000	ELECTROLYTIC CAPACITOR 10 MF 100 V	1	C201
26310100	CERAMIC CAPACITOR NPO 100 PF 50 V 5%	1	C202
28020700	CHOKER AL 514-1R8	1	B200
34010061	FASTON CONNECTOR TE115 2,8x0,8	1	FS201
34020011	PICTURE TUBE SOCKET	1	
61002640	VIDEO INPUT CABLE CT 2020 UTC 276	1	
61003020	UTC 312 HARNESS 9"	1	
50144731	PRINTED CIRC. FOR PICTURE TUBE SOCKET MT3000 ZH	1	
FRAMEWORK ASSEMBLY			
50112580	LEFTH BRAKET MT 1000/9" UTH 366	1	
50112590	RIGTH BRAKET MT 2000/9" UTH 365	1	
50112610	LEFTH FLANK MT 2000/9" UTH 368	1	
50112620	RIGTH FLANK MT 2000/9" UTH 367	1	
50116240	MAINE CHASSIS MT 3000/9" UTH 1768	1	
50422171	SHORT PLASTIC HOLDER UTH 585/B FOR P.C.	1	
50422180	LONG PLASTIC HOLDER UTH 584	3	
50111771	MAINE CHASSIS MT2000 UTH 322/B	1	
50111780	RIGHT BRACKET MT2000 UTH 321	1	
50111790	LEFTH BRACKET MT2000 UTH 321	1	
50111800	RIGHT FLANK MT2000 UTH 323	1	
50111810	LEFTH FLANK MT2000 UTH 323	1	
C.R.T. ASSEMBLY 9"-12"			
20820010	CRT 9" KIRON M 23 - P31	1	
28032060	DEFLECTION YOKE TOTOKU TMD 2522	1	
28030184	CRT 12" P31 ORION R 5120 HT	1	
61002840	VERTICAL DEFLECTION COIL HARNES ITALTEL UTC 303	1	
61002850	HORIZ. DEFLECTION COIL HARNES ITALTEL UTC 304	1	
ELECTRICAL CONNEXION KIT 9"-12"			
23234704	POTENTIOMETER 470 E P160C UTH 1920	1	
23261024	POTENTIOMETER 100K P160C UTH 1920	1	
34073750	CONNECTOR AMP. 1/280984/2	1	
61005250	CONTRAST CABLEFORM MT 3000 UTC 542	1	
61005460	BRIGHTNESS CABLEFORM UTC 566	1	



HANTAREX®

Electronic
Equipment
Manufacturer

50134 Firenze - Italy - 30, via Riguccio Galluzzi - tel. 055/4973 (20 linee r.a.) - telex 572341 HANTAR-I - telefax 055/268486

nuova SAMBERS
20144 Milano - Italy
45, via Stendhal
tel. 02/4225911/4228633
telex 322260 Samber-I

HANTAREX SUD
01100 Viterbo - Italy
strada Cassia nord km. 88
tel. 0761/250741 - telex 611537 Hansud-I
telefax 0761-250742

HANTAREX HELLAS-SELCON
Glifada - Athens - Greece
35, Ippokratos str. - Ellinikon
tel. 01/9910950 - telex 219875 Anta-Gr

HANTAREX U.K.
London SE26 5BA - England
Unit 2, Kangley Bridge Road
tel. 01-778 1414 - telex 8952421 Hantar-G
telefax 01-6599348

HANTAREX DEUTSCHLAND
D-5230 Altenkirchen
Siegenerstrasse 23
tel. 02681/3041-2 - telex 869991 Hantx-D

HANTAREX IBERICA
Barcelona II - España
210 Aragon str.
tel. 93/3232941 - telex 98017

HANTAREX CORP. OF AMERICA
Schaumburg - IL 60195
A-1261 Wiley Road
tel. (312) 8437226/843744
telex 004 312 8437224

HANTAREX JAPAN
Tokyo 104 - Japan
Dai Nihon P.R. Centre BLDG
3-8 Iriune - 2 Chome
tel. 03/5550831 - telex 28185 Fuiatrc-J

